

Cissell Manufacturing Company  
 831 S. First St. / P.O. Box 32270  
 Louisville, Ky. 40232-2270  
 PH. 502/587-1292  
 FAX 502/585-3625  
 www.cissellmfg.com



# The HD 190 lb. *On Premise Laundry* Dryers

## FEATURE

## BENEFIT

Gas - 525,000 BTU - 2,950 CFM  
 Steam - 15.7 BHP - 3000 CFM

Ideal balance between BTU and CFM for maximum efficiency and fast dry times

Full 190 lb. capacity basket  
 Safest Dryer Available

No sag basket

Rotational Sensor - Standard (DMP)  
 Reed Switch - Exclusive  
 Emergency Stop Button - Exclusive  
 Lint Door Switch - Exclusive  
 24 V Controls Ignition System  
 Extended Sides/Enclosed Back  
 Anti-wrinkle Safety tumble

Detects broken belts  
 Magnetic door switch that stops the dryer when the door opens  
 Instantly shuts off dryer  
 Automatically shuts dryer down when lint door is open  
 Additional safety for operator  
 Additional safety for operator  
 If door is not opened at the end of the cycle, dryer will tumble to remove residual heat while also preventing wrinkles

Hi-limit Bonnet Safety Thermostat Shuts down dryer should dryer overheat

Diagnostics - optional

Allows operator or service technician to instantly diagnose problems

Huge 3" Pillow Block With Sealed Bearings

3 year warranty - Best bearing and warranty available

No Air compressor Required

Less costly installation / less maintenance

Gear Motor Drive System

Rugged, quiet, and low maintenance

Large Door Opening with Large Glass

31- 1/4" door opening for eased of loading and unloading

Low Profile Height Design - See Page 2  
 (Steam only)

Allows 8 dryers to be shipped upright in a standard 40ft. container

Stainless Steel Basket

Standard

Large Stainless Steel Lint Screen

Allows for easier cleaning

Double -Motor Reversing

Standard

Stainless Steel Burners - Standard

Increased efficiency / long burner life

Dual Bonnet Heat System

Provides a uniform heat distribution eliminating hot spots

Electrostatically Applied Powder Paint

Painted inside and out to prevent chipping and rusting

Double Wall Construction

Keeps heat inside while outside stays cool

12" Duct Instead Of 16" Duct  
 1-1/4" Gas line Instead of 1-1/2" Gas Line

Less costly installation

Thermostatic Driven Damper

Allows the heated air to be directed to the load when called for.

# The HD190 *On Premise Laundry Dryers*

Specifications	U.S. Measure	Metric Measure
<b>Capacity (Dry Linen)</b>	190 lbs	86.2 kg
<b>Basket Diameter</b>	52 inch	1321 mm
<b>Depth</b>	48 inch	1220 mm
<b>Volume</b>	57.6 ft <sup>3</sup>	1630 liter
<b>Cabinet (HxWxD)</b>	57 5/16 x 54 x 71 15/16 inch	1456 x 1372 x 1827 mm
<b>Door Opening Dia.</b>	31-1/4 inch	794 mm
<b>Door Loading Ht.</b>	29 1/2 inch	750 mm
<b>Temperature Min.</b>	100° F	38° C
<b>Max.</b>	195° F	90° C
<b>Motor Drum</b>	2 Hp	1.49 kW
<b>Fan</b>	5 Hp	3.73 kW
<b>Exhaust Flow Rate</b>		
<b>Gas</b>	2950 cfm	5015 m <sup>3</sup> /h
<b>Steam</b>	3000 cfm	5100 m <sup>3</sup> /h
<b>Diameter</b>	12 inch	305 mm
<b>Maximum Air Displacement</b>	3000 cfm	5100 m <sup>3</sup> /h
<b>Recommended Operating Range</b>	2500-2800 cfm	4250-4760 m <sup>3</sup> /h
<b>Export Cube- Gas</b>	283 ft <sup>3</sup>	8 m <sup>3</sup>
<b>Export Cube- Steam</b>	271 ft <sup>3</sup>	7.7 m <sup>3</sup>
<b>Electric Connections</b>		NA
<b>Power Gas Input</b>	525,000 Btu/h	132,300 kcal/h
<b>Steam Consumption at 125 p.s.i. (Max. Pressure)</b>	15.7 BHP	132,000 kcal/h
<b>Connection Gas</b>	1-1/4" SPT	DN32
<b>Steam Inlet</b>	1-1/4" SPT	DN32
<b>Steam Outlet</b>	3/4" SPT	DN20
<b>Gas Pressure</b>		
<b>Recommended Inlet supply (Nat. Gas)</b>	5-12" WC	12-30 mbar
<b>Recommended Inlet supply (LP Gas)</b>	14" WC	34.8 mbar
<b>Manifold Pressure (Nat. Gas)</b>	3.5" WC	8.7 mbar
<b>Manifold Pressure (LP Gas)</b>	11" WC	27.4 mbar
<b>Shipping Dim. (H x W x D)</b>	89 1/2 X 58 X 84-1/2 inch	2274 X 1473 X 2146 mm
<b>Weight Net</b>	2168 lbs	983 kg
<b>Domestic Shipping</b>	2663 lbs	1208 kg
<b>Export Shipping</b>	2838 lbs	1287 kg

## Diagnostic Microprocessor

Feature	Benefit
1) 5 preset programs	No programming necessary, but programs can be easily customized.
2) On/Off Reversing button	Simply push button to activate or deactivate reversing action.
3) Anti-wrinkle safety tumble	If door is not opened at end of cycle dryer will tumble to remove any excess heat and at the same time prevent unnecessary wrinkling.
4) Temperature display	Simply push and hold temperature button and the display will show the current basket temperature.
5) End of cycle buzzer	Alerts operator that the cycle is finished.
6) Extra contacts standard	Allows a strobe light to be added for the hearing impaired. Meets Veteran Hospital specifications.
7) Basket RPM display	Simply push and hold the start button and it displays RPM's of the basket. This helps maintenance workers determine if belts need to be tightened.
8) Lint door monitor	Alerts operator to clean the lint filter.
9) Automatic diagnostic display	A) dor Indicates the loading door is in the open position B) Ldr Indicates lint door switch is in the open position C) cln Indicates lint filter needs to be cleaned D) FSS Indicates a failure of the sail switch E) -S- Indicates safety tumble mode F) End End of Cycle



Cissell Manufacturing Company  
**HEADQUARTERS**  
 831 S. FIRST ST. / P.O. BOX 32270  
 LOUISVILLE, KY. 40232-2270  
 PH. 502/587-1292 - FAX 502/585-3625  
[www.cissellmfg.com](http://www.cissellmfg.com)

*All specifications are subject to change without notice.*

**AGA, CGA, CSA and CE Approved**

Cissell Mfg. Co.  
 831 S. First St. / P.O. Box 32270  
 Louisville, Ky. 40232-2270  
 PH. 502/587-1292  
 FAX 502/585-3625  
 www.cissellmfg.com



Cissell Mfg. Co.  
 831 S. First St. / P.O. Box 32270  
 Louisville, Ky. 40232-2270  
 PH. 502/587-1292  
 FAX 502/585-3625  
 www.cissellmfg.com

# The HD 190 *On Premise Laundry Dryers*

## GAS DRYERS

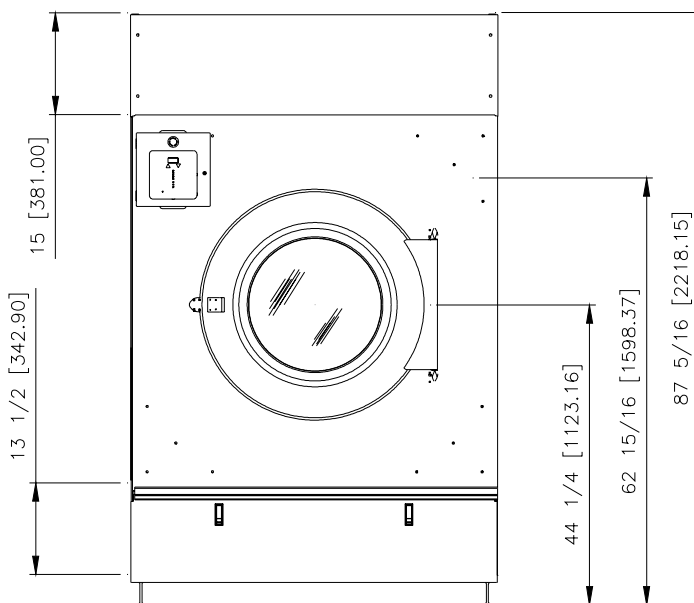
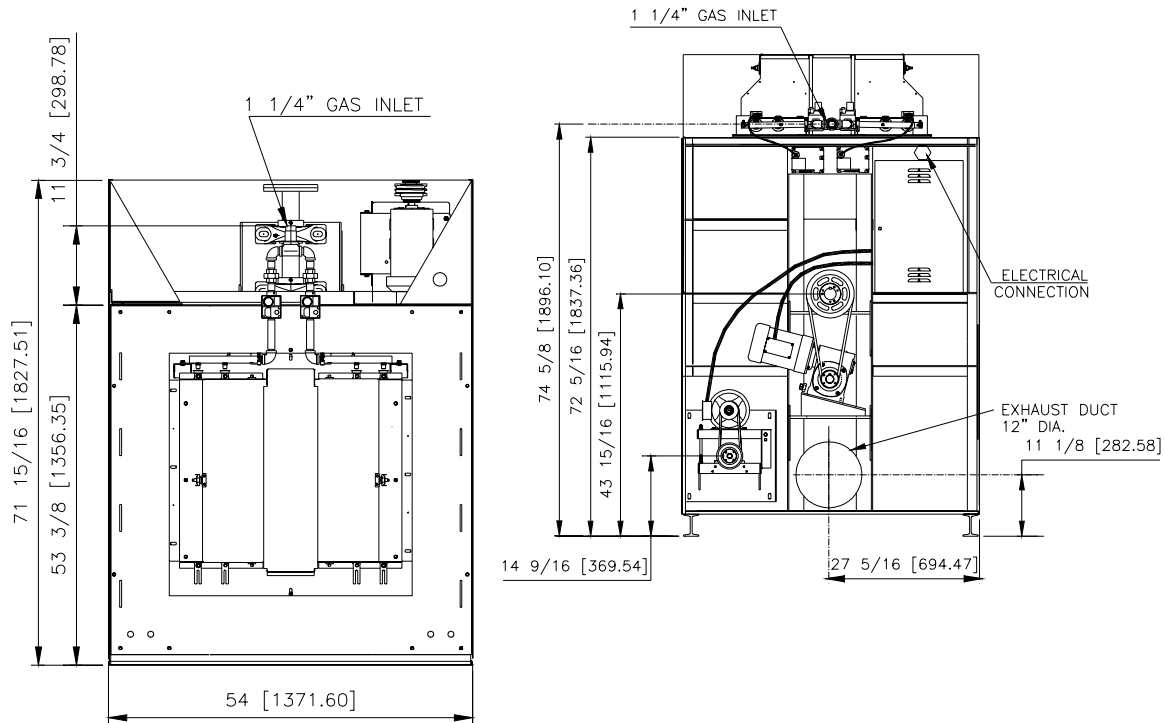
Clearance:  
 Top: 18" Minimum

Back: 24" Minimum.  
 36" recommended

Side: 0" permitted.

**ALL DIMENSIONS ARE +/- 1/4" (+/- 6.4 mm) AND ARE SUBJECT TO CHANGE WITHOUT NOTICE**

**Classified Material**  
 This drawing or diskette is submitted to you with the confidence that it will be used only for your information and application engineering studies and shall not be used in any manner detrimental to the interests of Cissell Manufacturing Company.



Cissell Mfg. Co.  
 831 S. First St. / P.O. Box 32270  
 Louisville, Ky. 40232-2270  
 PH. 502/587-1292  
 FAX 502/585-3625  
 www.cissellmfg.com



Cissell Mfg. Co.  
 831 S. First St. / P.O. Box 32270  
 Louisville, Ky. 40232-2270  
 PH. 502/587-1292  
 FAX 502/585-3625  
 www.cissellmfg.com

# The HD 190 *On Premise Laundry Dryers*

## STEAM DRYERS

Clearance:  
 Top: 6" Minimum

Back: 24" Minimum. 36" recommended

Side: 0" permitted.

**ALL DIMENSIONS ARE +/- 1/4" (+/- 6.4 mm) AND ARE SUBJECT TO CHANGE WITHOUT NOTICE**

**Classified Material**  
 This drawing or diskette is submitted to you with the confidence that it will be used only for your information and application engineering studies and shall not be used in any manner detrimental to the interests of Cissell Manufacturing co.

